



ARMIDALE CRESCENT

15

13

11

9

6*

5*

4*

3*

2*

1*

CALLAGHANS CREEK RISE

CRAIGIE BURN LANE

41*

40*

39*

38*

27

26*

28

25*

29

24*

30

23*

2.50

3.00

2.50

4.5m setback from Northern Boundary or 1m from crest of batter whichever is greater

LANDPRO.

OFFICES IN CROMWELL, GORE AND NEW PLYMOUTH - www.landpro.co.nz

Client

WFH PROPERTIES LTD

NOTES

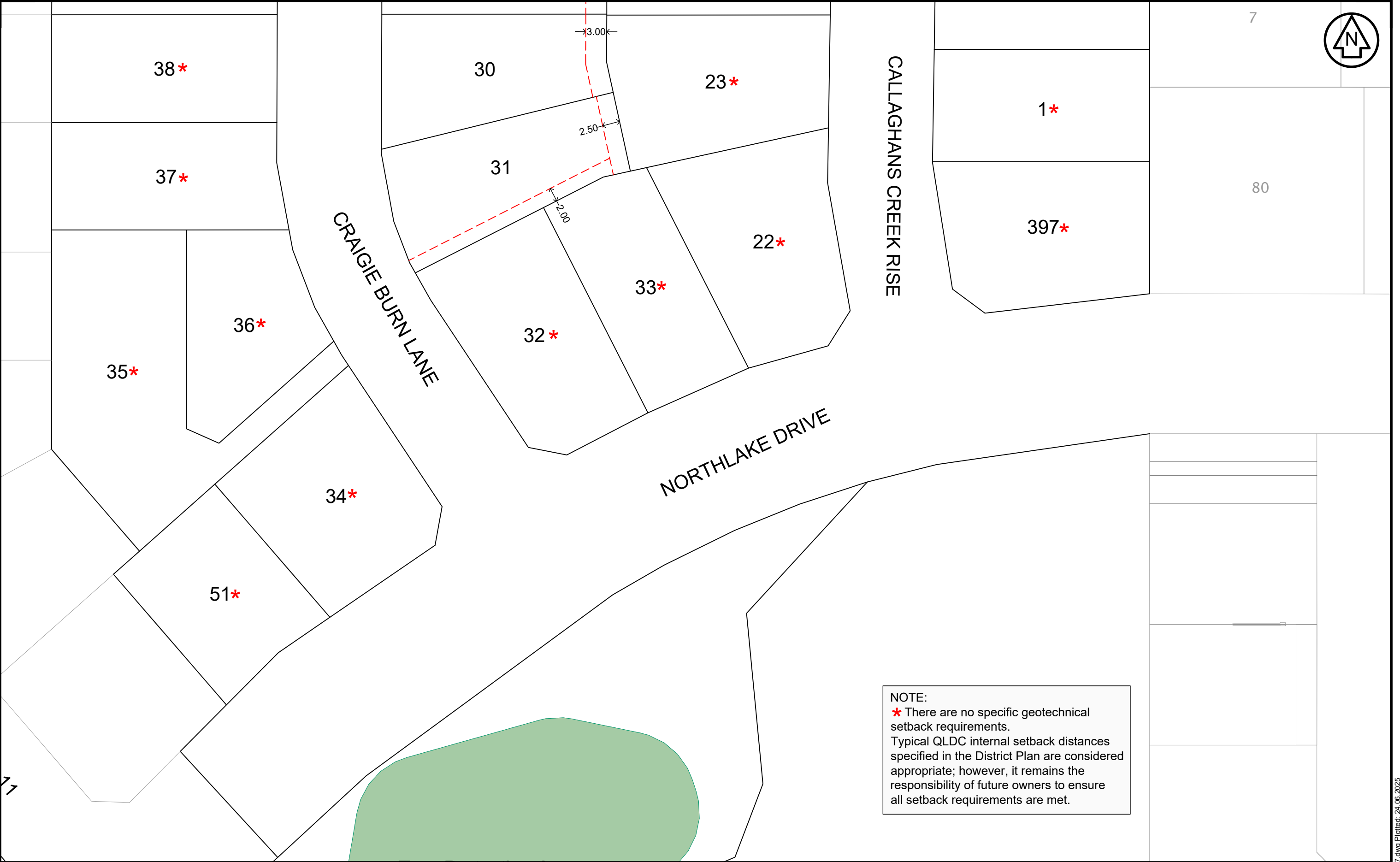
- All dimensions shown are in metres unless otherwise shown
- Copyright on this drawing is reserved
- Check any electronic data against the hardcopy plan to ensure it is the latest version
- If this plan is being used as part of sale and purchase agreement then it is done so on the basis that it is preliminary only, final dimensions and areas may vary on final survey

GEOTECHNICAL SETBACK DISTANCE AND LOCATIONS
STAGE 1- PEMBROKE HEIGHTS SUBDIVISION - RM220913
44 PEAK VIEW RIDGE WANAKA

Rev.	Date	Revision Details	By	Surveyed	Signed	Date	Job No.	Drawing No.
0	24.06.25	Initial Issue	SLM				21091	57_01
				Drawn	Signed	Date	Scale	
				SLM		24.06.25	1:500@A3	
				Designed	Signed	Date	Datum & Level	Rev.
				Insight Eng		19.06.25	LP2000 & NZVD16	0

NOTE:
* There are no specific geotechnical setback requirements. Typical QLDC internal setback distances specified in the District Plan are considered appropriate; however, it remains the responsibility of future owners to ensure all setback requirements are met.

C:\12ds\uploads\21091_57.dwg Plotted: 24.06.2025



NOTE:
* There are no specific geotechnical setback requirements.
Typical QLDC internal setback distances specified in the District Plan are considered appropriate; however, it remains the responsibility of future owners to ensure all setback requirements are met.